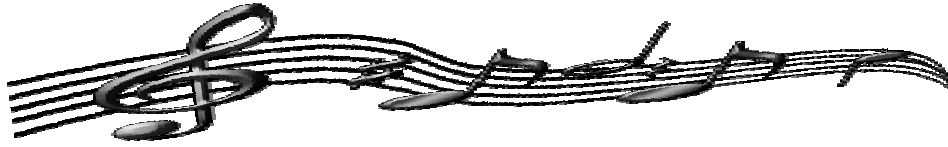


# Stroudsburg Music Department Concerts 2014-15



## November

<b>5</b>	<b>County Chorus</b>		<b>All Day</b>
<b>17</b>	<b>4<sup>th</sup> Grade Concert</b>	<b>JH</b>	<b>7pm</b>
<b>18</b>	<b>4<sup>th</sup> Grade Concert</b>	<b>JH</b>	<b>7pm</b>

## December

<b>6</b>	<b>Music Fest</b>	<b>HS</b>	<b>All Day</b>
<b>9</b>	<b>HS Choral</b>	<b>HS</b>	<b>7 pm</b>
<b>10 (snow date)</b>	<b>HS Choral Concert</b>	<b>HS</b>	<b>7pm</b>
<b>11</b>	<b>5/6 Chorus</b>	<b>JH</b>	<b>7pm</b>
<b>14 (snow date)</b>	<b>Music Fest</b>	<b>HS</b>	<b>All Day</b>
<b>15 (snow date)</b>	<b>5/6 Chorus</b>	<b>JH</b>	<b>7pm</b>
<b>16</b>	<b>Hamilton Kdg Program</b>	<b>Ham</b>	<b>7pm</b>
<b>17</b>	<b>HS Show Choir/Choral</b>	<b>HS</b>	<b>7pm</b>
	<b>Alumni Show</b>		
<b>18</b>	<b>Morey Kdg Program</b>	<b>HS</b>	<b>7pm</b>

## January

<b>7-10</b>	<b>District Band Festival</b>		<b>All Day</b>
<b>15</b>	<b>5 Orchestra</b>	<b>MS</b>	<b>7pm</b>
<b>22 (snow date)</b>	<b>5 Orchestra</b>	<b>MS</b>	<b>7pm</b>
<b>22-24</b>	<b>District Chorus Festival</b>		<b>All Day</b>
<b>29</b>	<b>5 Band</b>	<b>JH</b>	<b>7pm</b>

## February

<b>5 (snow date)</b>	<b>5 Band</b>	<b>JH</b>	<b>7pm</b>
<b>5-7</b>	<b>District Orchestra Festival</b>		<b>All Day</b>
<b>11-14</b>	<b>Region Band Festival</b>		<b>All Day</b>
<b>20-21</b>	<b>District Jazz Festival</b>		<b>All Day</b>
<b>26-28</b>	<b>Region Chorus Festival</b>		<b>All Day</b>

## March

3	HS Formal Band Concert	HS	7pm
4	HS Formal Orchestra	HS	7p
5	9 <sup>th</sup> Band/Choir	JH	7pm
6 (snow date)	9 <sup>th</sup> Band/Choir	JH	7pm
9 (snow date)	HS Formal Band Concert	HS	7pm
10	HS Choral Concert	HS	7pm
11 (snow date)	HS Choral/Orchestra	HS	7pm
12	8/9 Orchestra	JH	7pm
12-14	Region Orchestra Festival	All Day	
25-28	PMEA Conference	Hershey	

## April

1	Chamber Orchestra	HS	7pm
17-19	HS Musical	HS	
23	Arlington / Morey 2 <sup>nd</sup> Grade Concert	HS	7pm
23	Hamilton 2 <sup>nd</sup> Gr. Concert	Ham	7pm
28	3 <sup>rd</sup> Grade Concert	JH	7pm
29	3 <sup>rd</sup> Grade Concert	JH	7pm
30	5/6/7 Orchestra	JH	7pm

## May

5	5/6 Chorus	JH	7pm
6	HS Extra Curricular	HS	7pm
7	Clearview 2 <sup>nd</sup> Gr. Concert	HS	7pm
7	Hamilton 1 <sup>st</sup> Gr. Concert	Ham	7pm
12	7/8/9 Band	JH	7pm
13	HS Pops Concert	HS	7pm
14	7/8/9 Orchestra	JH	7pm
16	Hershey	All Day	
19	5/6 Band	JH	7pm
20	9 Chorus	JH	7pm
21	7/8 Chorus	JH	7pm
22	HS Jazz Band - Great Wolf	All Day	
27	District Jazz Concert	HS	7pm
28	Hamilton Kdg Concert	Ham	7pm
28	4 <sup>th</sup> Gr Band Inst. Selection	MS	6pm
29	HS Music Banquet	Evening	